

**STEREO**

---

# **ASU MID-SOUTH'S GREATEST HITS**

---

**GREATEST LOVE OF ALL ■ HUNGRY HEART**

**HEY NOW, YOU'RE AN ALL STAR ■ ASBTDC**

**MAN IN THE MIRROR ■ WE ARE FAMILY**

**WE WILL ROCK YOU ■ PUT ME IN COACH**

---

## **THE RECORD OF OUR YEAR**

**2021 ASU MID-SOUTH CHANCELLOR'S REPORT**

---



# LINER NOTES

## ARKANSAS STATE UNIVERSITY SYSTEM PRESIDENT

**Dr. Charles Welch**

## ARKANSAS STATE UNIVERSITY MID-SOUTH CHANCELLOR

**Dr. Debra West**

## ARKANSAS STATE UNIVERSITY SYSTEM BOARD OF TRUSTEES

**Price Gardner, Chair**

**Christy Clark, Vice Chair**

**Niel Crowson**

**Steve Eddington**

**Jerry Morgan**

**Bishop Robert G. Rudolph Jr.**

**Paul Rowton**

## ARKANSAS STATE UNIVERSITY MID-SOUTH BOARD OF VISITORS

**Hershel Owens, Chair**

**Lynn Allen**

**Alex Coulter**

**Clara Barr Ferron**

**Harold Scifres**

**Mary Meux Toney**

## ARKANSAS STATE UNIVERSITY MID-SOUTH FOUNDATION

## BOARD OF DIRECTORS

**Lucie Brackin, Chair**

**Franklin Fogleman, Jr., Vice Chair**

**Rev. Larry Banks**

**Steven Bius**

**Tracy Brick**

**Dixie Carlson**

**Johnekia (Neki) Catron**

**Janice Coleman**

**Shana Crittenden**

**Otis Davis**

**Grandon Gray**

**Fred Leonard**

**Landon Myers**

**Shelley Pugh**

**G.A. "Bert" Robinson, III**

**Llana Smith**

**Nick Sutton**

# CHANCELLOR'S WELCOME

Dear Friends,

I've discovered in the last several months that leading a community college during a global pandemic must be very similar to leading a rock band. A band is a unique and complex relationship, with so many different personalities, talents, and goals among members, it can get tricky. A great band makes engaging music, going beyond all boundaries and captivating their listeners. The basics of any great band are typically the same: rhythm, harmony, and performance. If those three elements are out of sync, well, the band simply doesn't make it in the biz!

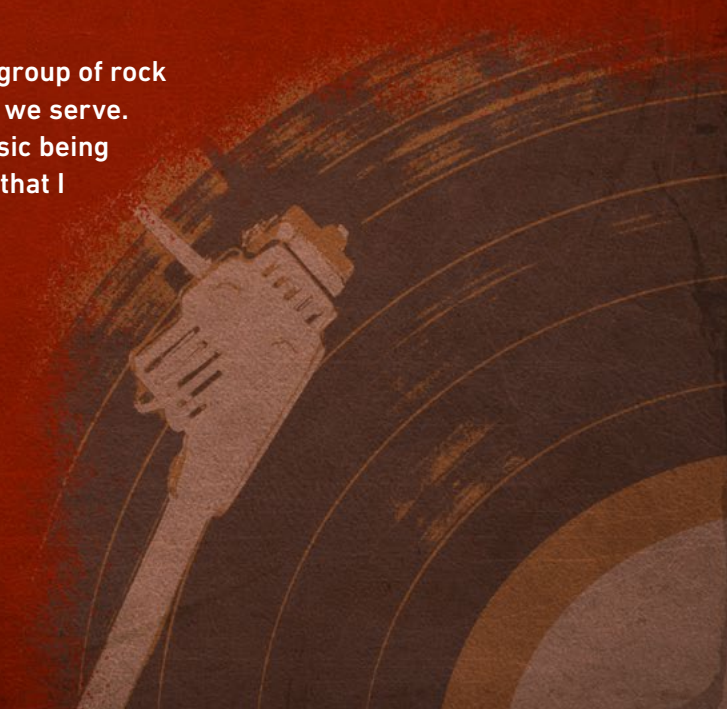
Since the pandemic began, ASU Mid-South's faculty and staff have had to find our rhythm as a band of educators. And believe me, at times this past year the tempo has been tough. But through our collaborative and upbeat work on this campus, we have learned that important sense of timing to stay in step with our students and their needs during difficult times.

Working harmoniously in the communities we serve is another key to our success this year. We've learned to play to our audience and strike a chord with our students, our business partners, and our community of supporters. Like any great band, we are continuously judged by our performance. We have staged some incredible shows of creativity and ingenuity, playing beyond what we even thought possible. A few times this year, like when the bridge shut down for months, we thought we might miss our gig. But the show went on!

As Chancellor of ASU Mid-South, I'm proud to say I work with a group of rock stars. Their talents are an inspiration to me and to the students we serve. This report offers just a couple of verses of the remarkable music being made on our campus. We are still writing our song, and it's one that I hope we will continue to write for years to come.

Here's to peace, harmony and inspiring rhythm  
for the year to come!

Debra West, Ph.D.  
Chancellor





# GREATEST LOVE OF ALL

I BELIEVE THAT CHILDREN ARE OUR FUTURE...  
TEACH THEM WELL AND LET THEM LEAD THE WAY.

-WHITNEY HOUSTON



thought they could be. But what makes a good teacher? What is it that inspires teachers to show the Greatest Love of All.

ASU Mid-South Teaching Instructor, Lori Forrester, believes that children are the future and she is focused on teaching the teachers well. She is not shy about sharing her passion for the work done in classrooms. In her 20 years with Mid-South, she has seen her students complete her program and move on to complete their bachelor's degrees and some have gone on to complete master's degrees. Like a proud mom, Mrs. Forrester is thrilled over the accomplishments of her students and the success of her program.

The results are music to her ears! ASU Mid-South now has alumni students teaching in every school in both West Memphis and Marion. That represents a significant impact in the future of Crittenden County.

"So many of our students have benefitted from our program being right here at home," said Forrester. "For many of our students, the path has not always been straightforward. The fact that a student can begin here with ASU Mid-South and end here on this campus but through Arkansas State University, has been life-changing for many who might not have been able to finish otherwise."

Forrester is referring to the teaching program agreement between Mid-South and ASU Jonesboro. Students complete their first two years of coursework at Mid-South and apply for admittance into the teaching program taught on the local campus but through ASU Jonesboro. "We have a good program here. Our relationship with the Jonesboro program is good. Our students go into the Jonesboro program feeling ready and prepared to complete their final two years. Anna Kansler from the Jonesboro program is a great instructor. She has, so far, a 100% pass rate on the Praxis exams," she remarked.

"I was able to be a mom and a student," remembers Cassie Adams, Principal of Bragg Elementary. "Having the classes here made it so convenient." Ashley Simon who teaches under Principal Adams, adds, "Lori made me a more professional person. She prepares you for the real world."

"I WAS ABLE TO BE A MOM AND A STUDENT. HAVING THE CLASSES HERE MADE IT SO CONVENIENT."

Cassie Adams, Principal of Bragg Elementary

"PEOPLE NEED TO HEAR THAT THE QUALITY OF THIS PROGRAM IS AS GOOD OR BETTER THAN OTHER SCHOOLS."

Tabitha Beasley, Wynne Public Schools

"People need to hear that the quality of this program is as good or better than other schools," says former Marion Elementary teacher, Tabitha Beasley, currently in the classroom at Wynne Public Schools. Johnny Washington at Marion Jr. High School concurs: "If the program hadn't been here, I would have struggled to get my degree. I felt they wanted me to succeed. The program helped me to grow into a young man. I needed to develop maturity coming from a small high school."

Blair Rogers teaches at Richland Elementary and feels her passion to help children and her love of teaching is a direct result of her program at ASU Mid-South. "I couldn't have asked for anybody better than Lori Forrester. Every time I reached out and asked for help, she was there. She always guided me in the right direction. It didn't end when the class ended."

AND THAT'S A SONG IN THE KEY OF LIFE!

**A**rguably the most common reason that teachers decide to teach is the ability to make a difference. There are many professions that give people the ability to have a positive impact on the world, but there are few professions that have as direct of an impact on creating a better society as teachers do. People tend to remember their teachers for years after they finish school; good teachers can inspire students to become something that they never





# HEY NOW, YOU'RE AN ALL-STAR

GET YOUR GAME ON,

- SMASH MOUTH

GO PLAY



A new release of records performed by a nationally acclaimed band sums up the 20-21 season of The Greyhounds and Lady Greyhounds.

The Greyhounds (16-5) ended their 20-21 season ranked #18 in the nation in the final NJCAA National Rankings after being ranked as high as #2 during the season shortened by the global pandemic. For the fourth season in a row, ASU Mid-South held a spot in the Top 20 National Rankings.

The impressive season included outstanding play by forward Sam Smith, who averaged 19.3 points, 9.1 rebounds, 1.4 assists, and 1.0 steal per game while shooting 57.5% from the field, 37.3% from the three-point line, and 78.2% from the free throw line. These amazing stats earned Smith Region Co-MVP honors, as well as the honor to be named to the NJCAA All-American Second Team. Smith is the third Greyhound to earn All-American honors and first freshman to be named in school history.

The Greyhound women jumped from 13th to 7th place nationally after an impressive 3-1 record at the NJCAA Division II National Tournament in Hickory, NC. Those three wins included an upset of #3 seed and defending National Champion Kansas City Community College and earned freshman point guard Keiana Delaney a coveted spot on the All-Tournament Team. In addition, Lady Greyhounds Coach Mercedes Corona was named South Plains District Coach of the Year.



ASU Mid-South Lady Greyhound Alyia Lee was named a 2nd team All-American. This is the first honor of this magnitude for a member of the Lady Greyhound's team, and it led to the greatest season in history for the Lady Greyhounds.

Head Coach Mercedes Corona returned for her third year at the helm after constructing one of the greatest turnarounds in sports. Her first season team lost their first 10 games in a row before having to cancel the remainder of the season having only four eligible players after the first semester. Her second season showed tremendous progress despite a 7-21 record against a tough schedule. But those first two seasons saw the pay-off in her third season, setting a program all-time high 25-2 record as the Lady Greyhounds ended the season in the esteemed position in the national rankings.

But perhaps the gold record for the season was that both our men's and women's programs posted record grade-point averages for the 2020-21 academic year. The men finished with a cumulative team GPA of 2.889, with the women showing a cumulative team GPA of 2.876. Overall, our athletic program posted a 2.882 cumulative GPA, which is remarkable particularly given their difficult practice and travel schedules.

**YOU ARE ALL-STARS, BOTH ON & OFF THE COURT.**





# HUNGRY HEART

## ASU MID-SOUTH FOOD PANTRY

LAY DOWN YOUR MONEY AND YOU PLAY YOUR PART...  
EVERYBODY'S GOT A HUNGRY HEART

-BRUCE SPRINGSTEEN

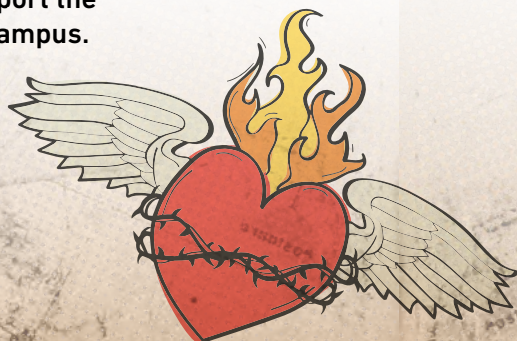
**F**ood insecurity on college campuses is a sad, sad song, and one that has long been an issue. But it's only in the last 10 or so years that data has backed anecdotes about surviving on instant noodles. A Temple University survey found that 39% of students at two-or four-year schools had experienced food insecurity within the previous month. Another study by Swipe Out Hunger found that 52% of students sometimes used off-campus food banks. And one-third of students surveyed said their hunger had impacted their ability to study at some point.

Recognizing the growing need on campus, ASU Mid-South worked with the Marion United Methodist Church to develop an on-campus food pantry. Located in the Sandra C. Goldsby Library, the pantry opened to all students, maintaining anonymity for any student accessing the pantry. The no-questions-asked policy was thoughtfully designed so students felt no shame or embarrassment. However, increasing needs during the pandemic meant the Marion UMC could no longer help stock the pantry at ASU Mid-South. Committed to serving our students with food insecurity, in early 2020, the college began to undertake the pantry on its own, and began soliciting state and community support.

A partnership with University of Arkansas Division of Agriculture, Research & Extension and ArDROP, which focuses on healthy options, has helped to supply the pantry with equipment such as a refrigeration unit and microwave. Thanks to community support and partnerships, ASU Mid-South has been able to support the growing need of students while on campus.

Attesting to their reputation of building up communities and people, The P3 Group and Brown Foundation CDC recently stepped in to help with the announcement of a \$25,000 commitment over five years to fund food supplies in the ASU Mid-South pantry. "No student should ever have to choose between staying in college or having enough to eat. That's why Brown Foundation and The P3 Group Inc. is stepping in to help students on the campus of ASU Mid-South and remove the barrier of food insecurity," said Dee Brown, founder and Chairman Emeritus of Brown Foundation CDC.

"Students working to prepare for their future shouldn't have barriers to their success. But they often do. And one barrier that is increasing across college campuses is food insecurity. The impact can be long-ranging," said Chancellor Debra West, PhD. "We really appreciate the support of Brown Foundation CDC and their commitment to the community."





# MAN IN THE MIRROR

IF YOU WANNA MAKE THE WORLD A BETTER PLACE,  
TAKE A LOOK AT YOURSELF, AND MAKE A CHANGE

-MICHAEL JACKSON

## ASU MID-SOUTH AWARDED NEARLY \$3 MILLION IN PBI GRANT FUNDING OVER THE NEXT 5 YEARS

**A**SU Mid-South's Predominantly Black Institutions (PBI) grant proposal was selected for funding, with an approved first year budget of \$599,992.

"We took a look and we're going to make a difference in response to a need to increase student success, particularly among the college's Black/African American male population. We have determined that our Black/African American male students are lagging far behind both institutional and national averages for student retention," said Dr. Debra West, Chancellor of ASU Mid-South. "Our proposal is designed to address this lag and to improve the educational outcomes, particular for this vital student demographic."

The ASU Mid-South plan forms a two-pronged approach that focuses on strengthening support for high-risk students and expanding access for these students into high-demand STEM programs.

ASU Mid-South will provide strengthened support for high-risk students by expanding resources to help academically-underprepared students succeed in college-level courses, develop resources for remote learners, redesign success coaching, better connect students to online resources and services and enhance faculty and staff remote learning support. Additionally, the college will strengthen and expand ASU Mid-South's Men of Color Conference, which works to increase knowledge leading to student success.

For the STEM approach, ASU Mid-South plans to expand its Aviation Maintenance Technology program because of student demand, strong partnerships to support the program, and promising career prospects for program completers. Mid-South routinely has more students apply for the Aviation Maintenance program than slots available, resulting in a waiting list. Additionally, the college plans to invest more than \$1 million to

renovate the current FedEx Aviation Technology Center, equipping a new aviation maintenance lab and adding classrooms and a student study and lounge area.

"The investment to expand the aviation maintenance program through the PBI grant not only addresses an anticipated shortage of aircraft maintenance technicians, but it also focuses on preparing an underserved student population for success in a high-demand STEM related field," said West. "The combination of satisfying both an urgent industry demand and an underserved student need is the highest form of satisfaction there is in higher education. The wages students can earn after graduating from this program and receiving their certifications is life-changing for themselves and for their families."

I'M STARTING WITH THE  
MAN IN THE MIRROR...

### PBI GRANT WILL SUPPORT:

- Expanding the structured learning assistance (SLA) program to help academically-underprepared students success in college-level courses;
- Creating a new Strategies for Success course to help students who are placed on academic probation get back on track academically;
- Expanding resources for remote learners, including a webpage to answer FAQs about remote learning and to connect students with available resources and support services;
- Strengthening and expanding the annual Men of Color Conference;
- Expanding capacity in the Aviation Maintenance program by providing for another AMT faculty member, converting selected Aviation Maintenance courses for hybrid delivery, and finishing out the second floor of the FX facility to provide a new Aviation Maintenance lab/classroom and a shared common space/lounge for students.

**PBI**





# AND THE GRAMMY GOES TO...



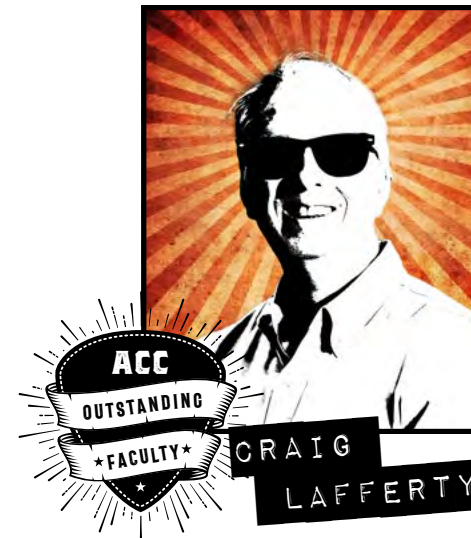
While Dr. Michael Lejman has always gone above and beyond, this particular year, he's taken on 'The Leader of the Band' role in the implementation of our new enterprise operating system, providing assistance to IT, our vendor and every campus department. Michael is also our campus point of contact for COVID. He works daily with HR regarding the health and safety of our employees and our students. We are incredibly lucky to have someone so committed to our employees and students.



April Holland digs deep with creativity, restructuring her courses to make them accessible for students in the virtual world. She spends many hours on campus working multiple positions. She embodies the philosophy of preparation by teaching students about themselves, the school and career preparation. As a faculty member, her door is "virtually" open for all students. Her level of communication with students is above and beyond the normal. She brings an infectious joyful energy with her to all school events.



Our Career Pathways Initiative (CPI) queen is Jamie Woodson. Jamie has recently been hailed for her energy and relationship building, both on our campus and in the business community. She is a passionate advocate for her students and understands how to match their needs with available resources and she always seeks ways to connect her CPI students to opportunity. We are very fortunate to have Jamie leading this band for our students. She is truly a rock star.



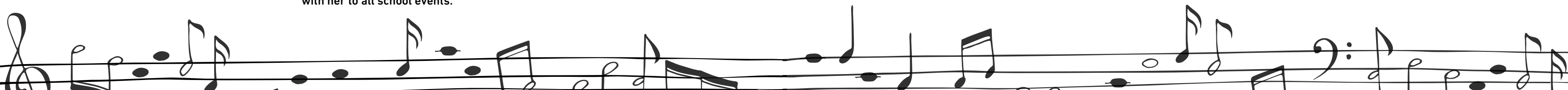
Dr. Craig Lafferty works hard behind the scenes for our students and faculty. Knowledgeable, very approachable, and highly resourceful, Dr. Lafferty rocks the professionalism and innovative teaching methods. Like the band manager, Craig is well loved by his students and pushes them to be the best they can be. Seeing the best in everyone, he has a down-to-earth approach and uses his past academic stories to encourage students. Craig is one cool cat!



Best 'Up and Coming Performer' award goes to Luke Reece! He's been praised as an amazing student and an even better human being, with a work ethic that is beyond measure. He goes all in and puts his full effort into everything that he does. A natural leader in school and scouting, Luke is a full-time student and valuable member of our student tutoring support team. Luke is our Academic All-Star, but he is truly a Rock Star!



Best Performance for Outstanding Alumna goes to Donna Coats! Donna came to Mid-South seeking a degree in middle-school education. She faced many challenges, including several knee surgeries and spent most of her time on crutches! But she persevered. She earned her bachelor's degree from ASU here on the Mid-South campus and began teaching at Weaver Elementary. She has since earned her master's degree in special education and still teaches at Weaver. Donna has made us proud!





# WE ARE FAMILY

JUST LET ME STATE FOR THE RECORD  
WE'RE GIVING LOVE IN A FAMILY DOSE

-SISTER SLEDGE

## Simply the Best<sup>™</sup>

**T**he Career Pathways Initiative (CPI) program has increased enrollment by 20%. This increase in new students, along with the number of students retained, represents overall growth of 133%, one of only five colleges in Arkansas with growth in the prior year. WOW! Headliners Jamie Woodson and Sherika Buggs have worked tirelessly to support the students in this program that supports single parents.

CPI's goal is to help modest-income parents gain skills leading to employment and less reliance on public assistance. They work to increase enrollment in education and training programs resulting in jobs and employment retention.

**THAT'S CERTAINLY GIVING LOVE  
IN A FAMILY DOSE!**

## Stayin' Alive<sup>⚡</sup>

**T**he ASU Mid-South EMT Program Lead Instructor, Glenn Faught, reported that all 12 Advanced EMTS from our most recent class passed their national practical exam. That's another 100% pass rate for Glenn and his outstanding program. Congratulations to students and faculty alike! That is quite an accomplishment.



## Tangled Up in Blue<sup>🎵</sup>

**T**he Home Visiting Services team housed at Arkansas State University MidSouth was given the nod by the Parents as Teachers National Center, Inc., (PATNC) as a **Blue Ribbon Affiliate**. The prestigious endorsement affirms that the local team is one of the solid gold performing home visiting affiliates within the PATNC's international network.



## Don't You Know That You Are a Shooting Star<sup>🌟</sup>

**L**ed by our TRiO Student Support Services department, ASU Mid-South celebrated National First-Generation College Student Day on November 8, with balloons, activities, an Instagram take-over and a photo booth. This date is the anniversary of the signing of the Higher Education Act (HEA) of 1965. Like other legislation of that era, HEA was intended to help level a playing field for American from low-income and minority backgrounds.

Research shows that a welcoming environment where first-generation college students feel safe and encouraged by others who may have gone down the same path, helps these students to persist through to their ultimate goal of attaining a degree.

Welcoming students is just one piece of the symphony that is student support services at Mid-South!



## CPI SUCCESS STORY

**L**yndsey Aaron came to Career Pathways in February 2019 with the goal of becoming employed in the healthcare field. She had two daughters, a teenager and a preteen living at home while being self-employed cleaning homes. With her sights set on a career in healthcare, Lyndsey decided to apply and was accepted into the Respiratory Therapy program at ASU Mid-South. She did exceptionally well in this program, and following graduation in May 2021, Lyndsey immediately earned her RRT certification. Lyndsey is now employed with the Forrest City Hospital earning between \$25-\$29 per hour as a Registered Respiratory Therapist.

**"CAREER PATHWAYS TOOK ALL THE STRESS OF EXTRA COSTS OFF OF ME.  
SO HELPFUL AND A RESOURCE THAT SHOULD BE MORE UTILIZED."**



WE WILL,

WE WILL ROCK YOU

# The NEW DEANS

**T**he ASU Mid-South Academics Affairs division is taking care of business, creating efficiencies in processes and decision-making with a goal of better serving students, by transitioning its operational structure into a four-part structure with a new dean heading up each part.

Long-time ASU Mid-South employees, Karen Mitchusson and Erin Gordon have been named to two of the new positions. Mitchusson, former lead faculty for Business, was recently named Dean for Business, Computer Science, and Mathematics, and Gordon, former lead faculty for Science, was named Dean for Allied Health and Sciences.

Both of these phenomenal women have demonstrated a level of dedication, leadership, integrity, and knowledge that will serve them

(and us) well in their new roles. There's no doubt they will continue to shine in these leadership positions.

The new Dean of Liberal Arts and Teacher Education, Dr. Tracy McLaughlin brings over 15 years' experience teaching in community colleges. Dr. McLaughlin is an Oral Communications instructor by trade and holds a master's certification in Instructional Design and Technology and an Ed.D. in Instruction and Curriculum Leadership.

Auditions are still underway for Dean of Advanced Manufacturing & Transportation band member position.



KAREN  
MITCHUSSON



ERIN  
GORDON



DR. TRACY  
GIOVANETTI

## A-S-B-T-D-C

*Find Out What it Means to Me*

**'Y**ou Got to Respect' Small Business because they provide opportunities for entrepreneurs and create meaningful jobs with greater job satisfaction. They foster local economies, keeping money close to home and supporting neighborhoods and communities. So when the opportunity to expand the network of Arkansas Small Business and Technology Development Center (ASBTDC) became available in our region, ASU Mid-South jumped on the chance to partner. The center opened on the campus of ASU Mid-South in early summer of 2021 serving residents of Crittenden, Cross, Woodruff, St. Francis, and Lee counties.

ASBTDC is a statewide economic development program that assists entrepreneurs, both new and seasoned, with every aspect of business creation, management, and operation. ASBTDC helps small Arkansas businesses thrive with services designed to support entrepreneurs and owners as they gain the knowledge and skills to succeed in business.

Funded by institutions of higher education and the U.S. Small Business Administration, these offices provide numerous no-cost services, including individual and confidential consulting; help for entrepreneurs and small businesses seeking capital; education and training events on small business topics; and market research services.

Jack Poff, Jr. was named Regional Office Director for the center. "I'm so excited to be a part of the ASBTDC and all that we have to offer small businesses here in our region. Having been a small business entrepreneur for most of my career, I bring a sense of realistic understanding to this role, and I'm so happy to be able to help others achieve success," said Poff, Jr. "The ASBTDC has a proven track record of helping their clients achieve results, and I'm looking forward to bringing those results to the region we serve."



JACK  
POFF

WHAT YOU WANT,  
BABY, I GOT IT.  
WHAT YOU NEED,  
DO YOU KNOW I GOT IT?

-ARETHA



# AND THE HITS JUST KEEP COMING!

**WE HAVE A GOOD VIBE WITH OUR FANS WHO SUPPORT OUR RECORDS.  
HERE'S A LIST THAT WENT GOLD IN 2021!**

## EAST CENTRAL AR COMMUNITY CORRECTIONS

ASU Mid-South launched a new initiative between the Jeremy Jacobs Hospitality Management program and the East Central Arkansas Community Corrections Center (ECACCC), in West Memphis, in which the College is providing non-credit classes in Hospitality Management to ECACCC residents. Currently, 12 of the approximately 350 ECACCC residents are enrolled in two non-credit courses. Upon successful completion, each will have attained education/training and certifications which are recognized by the Hospitality industry, enhancing their ability to reenter into viable employment in the Hospitality industry workforce. Other non-credit classes and certifications being offered to the residents of ECACCC include Welding, Work Ready Essentials, OSHA training, and Forklift certification.

## TRIO EDUCATIONAL OPPORTUNITY CENTER

The EOC Program has been funded again for another 5-year cycle. EOC provides counseling and information on college admissions and financial aid options to qualified adults who want to enter or continue a college program. Its services are provided free to qualified participants, including adults 19 years of age and older, low income earners, first generation college students, dislocated workers, those who are underemployed or unemployed, and individuals with disabilities. ASU Mid-South's program serves residents of Crittenden County, Arkansas, and Shelby County, Tennessee.

## FOUNDATION FOR THE MID-SOUTH

Our grant from the Foundation for the Mid-South provides us with \$15,000 dollars to purchase ten commercial grade table and chair fixtures and four three-row aluminum bleachers to be placed near campus buildings and in a soccer field for use during games or for outdoor gatherings. While we were already aware of a need for additional outdoor seating, the pandemic has highlighted the need for comfortable socially distanced spaces where students can congregate in between classes or for student activities and allow faculty additional options for outdoor learning experiences or student organization meetings.

## GENE HAAS FOUNDATION

ASU Mid-South recently received a \$15,000 grant from the Gene Haas Foundation to build skills for students in the machining industry. The grant will be used to support scholarships for CNC Machining students and related technical manufacturing/engineering programs. The Gene Haas Foundation recognizes that the future of manufacturing in the United States – and around the world – depends directly upon the availability of skilled workers.

## READY FOR LIFE

Governor Asa Hutchinson's initiative, Ready for Life, is designed to help Arkansans close the gap between unemployment, training, and careers. Part of this initiative is funding for programs that can get Arkansans trained and quickly ready for employment.

Answering this call, with funding from the initiative, ASU Mid-South is has expanded its Diesel Maintenance Technology program to allow for more students to complete credentials. Also, an even quicker solution to answering a need in our area is forklift operating. Mid-South is currently offering non-credit forklift driving certification training. The grant waives the \$75 registration fee.

Watch the ASU Mid-South website for information about these reoccurring forklift certification classes being offered in 2022.



# PUT ME IN COACH

I'M READY TO PLAY,  
- JOHN FOGERTY  
TODAY



## HAIL MARY



As many of you know, it's been a minute since we've been able to hold our largest annual fundraiser, the Tommy Goldsby Wild Game Dinner and Auction. We had hoped to do an outdoor "Tailgate" version of that event back in the summer, but unfortunately that got sidelined (see what we did there?) by the delta variant. So, in an attempt to score at least a few dollars for concurrent scholarships, the committee decided to throw a Hail Mary in the form of an online auction. Items included hunting gear, art, shopping excursions, dining experiences, getaways, and more.

## TAKE A SHOT AT THE BIG GAMES IN THE BIG EASY!

You know you've heard this song before...always wanted to make it to the College Basketball Championship? Here's your chance to help support athletic scholarships at ASU Mid-South with the purchase of our Big Games in the Big Easy raffle. Grand prize is a trip for two to New Orleans for College Basketball's final three games from Friday, April 1 to Tuesday, April 5, 2022. Trip for two includes All Sessions Game Tickets, 4 nights at Hyatt Centric French Quarter(double occupancy), Official NCAA Fan Experience Hospitality, Jazz Brunch, and more. It's a once-in-a-lifetime custom experience for any fan regardless of which team you support! Purchase your raffle ticket online at <https://BigEasy.givesmart.com>, or text BigEasy to 76278 or buy in person from any Foundation board member, or by calling the Foundation office at 870-733-6880.

Special thanks to First National Bank of Eastern Arkansas for underwriting for the prize.

## DONORS

### SPONSORS & EVENT SUPPORTERS

Accent Flowers & Gifts  
**Acme Pest Management**  
Angel Farms  
**Best Beverages of West Memphis**  
**Arkansas Greyhound Kennel Association**  
**Arkansas State University System**  
**Asgrow/Dekalb**  
ASU Mid-South Welding Department  
**B. Riley Wealth Management**  
Backwoods Boutique  
**Banded/Avery Outdoors**  
Bangie Camper  
**Baptist Memorial Hospital - Crittenden**  
Barton's of West Memphis  
**Bayer Crop Science**  
Tammi and Wes Bell  
**Best Beverages of West Memphis**  
**Big Earl Farms**  
**Bobby Cupples Farm Joint Venture**  
**Lucie Brackin LBD Law Firm**  
**Brittney Turner**  
Joey and Pat Burch  
Jammie Burrows  
**Cargill**  
Carol Johnston  
**Kristen & Jason Carter**  
**CenterPoint Energy**  
**CGB**  
Chick-fil-A  
**Chrissy & Kirby Carlson**  
Patti Coleman  
**Crittenden Title & Escrow & William C. Ayres Attorney**  
**Colton's**  
**Danmar Propane**  
**Double LL Farms - Llana Smith**  
**Dupont Pioneer**  
**Loree and John Easley**  
**East Arkansas Family Health Center**  
East Cotton Company  
Eastern Arkansas Realtors Association  
Vickie and David Egleston  
**Elbow Slough**  
**Farm Credit Mid-South**  
**Kim & Mark Felker**  
**Jody and Dr. Glen Fenter**  
**Morgan Fenter**  
Rep. Deborah Ferguson and Dr. Scott Ferguson  
**Fidelity Bank**  
**First National Bank of Eastern Arkansas**  
**Fogleman Farms**  
Gail Fogleman  
Wally Fowler  
**Ginger Goldsby**  
**Great River Lodge**

**GreenPoint Ag**  
**Greenway Equipment**  
**Diane and Leonard Hampton**  
**Helena Agri-Enterprises**  
**Holly Chevrolet/Vaughn Ford Sales**  
**Horseshoe Services and Pat Bonds**  
**Jason Fair - B. Riley Wealth Management**  
Jordan McCutchen Interiors  
JR&K Printing  
**Local Seed Company**  
**Louis Dreyfus Company**  
**Amy and Michael Marconi**  
Marian Smith  
**Marion Advertising & Promotion**  
**Marion School District**  
**Mark and Jane Pirani**  
**Marsha & Henri Wedell**  
Mary Toney  
Matt Odum  
**Matthew Coe, Attorney-at-Law**  
McCarty Pottery  
**Memphis Tri-State Fence Association**  
Merry Magnolia  
**Mid-South Dermatology Clinic**  
**MidSouth Grain Inspection**  
**Mike Carlson Farms**  
**Jana & Phil Neri**  
**Nutrien Ag Solutions**  
**Andrea and Sam Pirani**  
**Premier Bank**  
**Shelley & Jim Pugh**  
**Raymond James - Landon Myers & Brian Reece**  
RBD Law Firm  
**Ricetec**  
**Ritter Disposables**  
**Connie and Bert Robinson**  
Scarborough Family Dentistry  
*Sherri Reid*  
**Southern States Parts & Equipment**  
**Southland Casino Racing**  
**Anne and John Stokes**  
Tacker's Shake Shack  
True Value Hardware  
**Turrell Flying Service**  
**Dr. Debra West & Dr. Rod Risley**  
**West Memphis Convention and Visitors Bureau**  
**West Memphis Fence**  
**Shannon and Charles L. Williams III**  
Wildwood Antiques/Katherine Wildy  
**Sandra Goldsby Williford**  
**Williford Realty**  
Willowbend Healthcare and Rehabilitation  
*Debbie Yen*

### EMPLOYEE DONORS

JaNan Abernathy  
Melissa Andrew  
Marie Armour  
John Auker  
Eddie Barrentine  
Sheena Bass  
Nicole Brooks  
Shermel Brown  
Shericka Buggs  
Crystal Burger  
Keith Burks  
Brooke Caldwell  
Letory Collins  
Ed Cook  
Riley Cook  
Tom Cook  
Wendy Crawford  
Michael Dailey  
Christopher Davis  
Stefanie Dietrichsen  
Raymond Duch  
Callie Dunavin  
**John Easley**  
Sharon Ellis  
Glenn Faught  
Mary Field  
Robert Fountain Jr.  
Sherry Fountain  
Kelli Gaines  
Gregory Gardner  
Virginia Gardner  
Lonzo Gatlin  
Erin Gordon  
Jeff Gray  
Faith Grissom  
Lisa Haggard  
Thomas Halford  
**Diane Hampton**  
Cody Hastings  
Diedra Hawkins  
Raymond Hawkins  
Peg Hess  
Natasha Hill  
**April Holland**  
Michael Holmes  
Donald Hutchinson  
Anwar Jamison  
Debra Jennings  
Angshylea Jones  
John Judd  
Brandi Katterjohn  
Stephanie Krehl  
Michael Lejman  
Tyese Love  
Mario Martinez Cabrera  
Mark McClellan  
*Leigh McDaniel*  
Patricia McGarrity  
Tracy McLaughlin  
Billie Miner  
Karen Mitchusson  
Kyrsten Moorman  
James Moses  
Ernesto Muniz  
Bryanna Needham  
Bonnie Nichols  
Jere Norville  
Claudia Ohneck  
Paula Pace  
Phillip Para  
Christopher Parker  
Jaimie Patterson  
Matthew Patton  
Jack Poff, Jr.  
Margaret Poole  
Gerar Pope  
Phillip Proctor  
Rick Puckett  
Angela Raymer  
**Jeremy Reece**  
Sherri Reid  
Kayla Reno  
Sharon Richardson  
Mark Rowell  
Fesobi Salu  
Benjamin Sasser  
Erin Schlauch  
Lonzo Gatlin  
Nicolle Seals  
Daniel Shaull  
Donna Shaull  
Emilee Sides  
Debra Simmons  
Millard Smith  
Montel Smith  
Vanessa Smith  
Lynda Steele  
Lindsey Stevens  
Bridget Stewart  
Pete Sullivan  
Drema Trammell  
Grace Troutman  
Daniel Turner  
Opal Turner  
Lisa Vaughn  
**Debra West**  
Anthony Wilkinson  
John Wilkinson  
Jason Williams  
Beth Wilson  
Amanda Winsett  
Debbie Yen



SCHOLARSHIP DONORS

SCHOLARSHIP DONORS

Solon Anthony  
**Arkansas Greyhound Kennel Association**  
Lynn and Todd Allen  
*Beth Arnold*  
**Eugene Barham, II**  
Sue Bartholomew  
**Jimmie Barham Beauchamp**  
Tracy and David Brick  
James and Marha Buffington  
Pam Capps  
**CenterPoint Energy**  
Andre' Coleman, Service Master  
**Crittenden County Board of Realtors**  
**Crittenden County Farm Bureau**  
Crittenden National Bank  
DeltaARTS Alex Waddell Smith  
**Loree and John Easley**  
Eastern Arkansas Realtors Association  
Evern Digby  
**FedEx**  
**Mark and Kim Felker**  
**Fenter Physical Therapy**  
**Jerry and Sara Fenter**  
**Jody and Dr. Glen Fenter**  
Ivan Ferron  
**The Fogleman Family**  
Charlotte Gray  
Sherry Gray  
**Greyhound Breeders of AR**  
Beryl Herren  
Nancy Hogan  
**April Holland**  
**Fred and Janene Leonard**  
Pat and Tommy Lewis  
Diane Lum  
Leslie MacLean  
Ruth and Mac McKinnon  
Donna and Bill Marotti  
Argie Moudy  
Nancy and Jerry Mullins  
*Ernesto Muniz*  
**Shelley and Jim Pugh**  
**Jeremy Reece**  
Robert Crittenden Chapter NSDAR  
**G A Robinson III**  
Dorothy Sisnett  
**Llana Smith**  
Cathy and Vann Smith  
Joanne Smith  
Caryl and Dr. GW Sorrells  
**Southland Casino Racing**  
**Don and Twilla Threm**  
Mary Toney  
Turner Planting Company - Ford Turner Scholarship  
Brenna Vest  
The Wah Family  
Cynthia and Steve Werner  
**Dr. Debra West & Dr. Rod Risley**  
**Willowbend Healthcare and Rehabilitation**  
Kimberlea Wilson  
Catherine and Dan Young

ENDOWED SCHOLARSHIPS

A. B. Smith, Jr. Non-Traditional Student Scholarship  
Crittenden County Board of Realtors/  
Ralph Sloan Memorial Scholarship  
Crittenden Regional Hospital  
Foundation Scholarship  
David Brennan Ray Memorial  
'Sunshine' Scholarship  
Dr. Glen F. Fenter "Working for  
the Future" Scholarship  
Grover Lloyd Memorial Scholarship  
Jimmie C. Barham Endowed Scholarship  
John Gammon, Jr. Memorial Scholarship  
Marvin Steele Scholarship  
Mary and John P. Wilson Memorial Scholarship  
Molly Whistle Paudert Scholarship  
Phillip M. Brick Memorial Athletic Scholarship  
Reed C. and Frank G. Fogleman Memorial  
Endowed Scholarship  
Roberta Jackson Memorial Scholarship  
Rosewood United Methodist Church Scholarship  
Roy L. Gray Scholarship  
Sean Coulter and Jennifer Coulter  
Memorial Scholarship  
Southland Casino and Racing Scholarship  
Verneil and A.L. Reed Scholarship

GRANTS, MEMORIALS,  
& OTHER DONATIONS

ASU System Foundation Board of Trustees  
ASU Mid-South Foundation Board of Directors  
Lynn and Todd Allen  
**Lucie Brackin**  
**Delta Dental**  
**Gene Haas Foundation**  
Leia Hendrix  
**Rick Hogan**  
**Mr. and Mrs. Marshall Humphries**  
Steve Lackey Company  
Jalen "Uno" Lynn  
Suzanne and George Murphree  
**Mid-South Foundation**  
**Mr. and Mrs. Landon Myers**  
Old Saint Paul Baptist Church  
**Shelley and Jim Pugh**  
**Dr. John Rada and Llana Smith**  
Nick Sutton  
Meg Webb  
Paige West  
**Charles L. Williams, III**  
Catherine and Dan Young

NOTES:

**BOLD** = Donors who gave at least an accumulated  
\$1,000 during 2021

*Italics* = Employee Donor

GREYHOUND ATHLETICS  
SPONSORS & BOOSTERS

DOG PACK MEMBERS

*JaNan Abernathy*  
*Sheena Bass*  
Shane Broadway  
*Erin Carmichael*  
*Suvra and Sanjay Chowdhury*  
*Tory Collins*  
*Callie Dunavin*  
**John Easley**  
*Greg Gardner*  
*Marjorie Gardner*  
Price Gardner  
Gloria Gillam  
*Erin Gordon*  
*Jeff Gray*  
*Lisa Haggard*  
**Diane Hampton**  
**Rick Hogan**  
**April Holland**  
*Debra Jennings*  
*Stephanie Krehl*  
*Michael Lejman*  
*Sandra Mabry*  
Darin McCollum  
*Leigh McDaniel*  
*Billie Miner*  
*Ernesto Muniz*  
Landon Myers  
*Bonnie Nichols*  
*Claudia Ohneck*  
Hershel Owens  
*Phillip Para*  
*Jack Poff, Jr.*  
*Gerar Pope*  
Shelley and Jim Pugh  
**Jeremy Reece**  
Sallie Reece  
*Pete Sullivan*  
Ken Thomas  
*Chris Tindall*  
*Grace Troutman*  
**Debra West**  
*Nan Whitworth*  
*Jamie Woodson*  
*Debbie Yen*

BOOSTER CLUB MEMBERS

Acme Pest Management  
Best Beverages of West Memphis  
Colton's Marion  
First National Bank of Eastern AR  
Ford of West Memphis  
Greenway Equipment  
Holiday Inn Express  
Holly Chevrolet  
Mid-South Dermatology  
Pizza Pro  
Shake Shack  
Steve Lackey Co.

# THE LONG & WINDING ROAD

*that leads to your door will never disappear...*

**ASU Mid-South and the Foundation remember two dear friends and advocates  
for our college whose long lives leave a legacy that will never disappear.**



**Lloyd C. McCuiston, Jr.** served in the Arkansas House of Representatives for 34 years, through 5 governors and ten years as Speaker of the House. He understood the need for higher education in Crittenden County and he worked tirelessly for it while in the House of Representatives knowing that it would fuel economic growth and change lives in the Delta. He fought for a vocational technical college and then fought again for a community college passing Legislation establishing Mid-South Community College. He lived to be 103, and was often quoted as saying that securing a College here in Crittenden County was one of his greatest achievements.



**Jimmie C. Barham** was an inspirational and passionate elementary educator who supported and advocated for ASU Mid-South since its early days as Mid-South Community College when Mrs. Barham enthusiastically served on the Foundation Board of Directors. So fervent in her zeal for education, she went back to college to earn her Library Science degree, and in 1985 she graduated with honors at age 54. "Miss Jimmie" served as the Librarian for Earle Elementary School for more than 30 years before retiring in her mid-eighties. In 2001, her children, Eugene and Jimmie, established an annual scholarship in her honor, and recently created the Jimmie C. Barham Endowed Scholarship. Through her gracious service and this scholarship, "Miss Jimmie" will continue to inspire students at ASU Mid-South in perpetuity.



# ASU MID-SOUTH'S GREATEST HITS

1. GREATEST LOVE OF ALL

2. HEY NOW, YOU'RE AN ALL-STAR

3. HUNGRY HEART

4. MAN IN THE MIRROR

5. AND THE GRAMMY GOES TO...

6. WE ARE FAMILY

7. *The* NEW DEANS

8. A-S-B-T-D-C

9. PUT ME IN COACH



ARKANSAS STATE UNIVERSITY  
**MID-SOUTH**

2000 West Broadway | West Memphis, Arkansas  
870.733.6722 | [www.asumidsouth.edu](http://www.asumidsouth.edu)